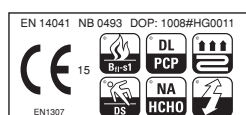
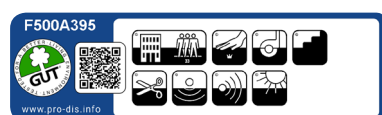
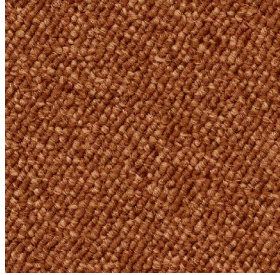


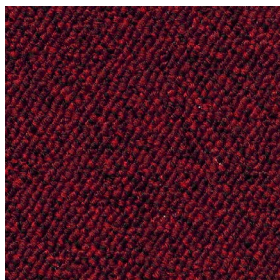


Type of manufacture (wall-to-wall carpet) Art der Herstellung (Teppichboden) Methode de fabrication (moquette)	ISO 2424		1/10 Loop Pile (tufted)
Width Abmessungen Largeur		cm	400 + 500
Primary backing Trägermaterial Premier dossier	ISO 2424		Polypropylene woven
Secondary backing Rückenausrüstung Envers sous-couche	ISO 2424		Polypropylene woven
Pile fibre composition Faserzusammensetzung der Nutzschicht Composition du velours	ISO 2424		iMax® 100% Solution Dyed Nylon (SDN)
Total thickness Gesamtdicke Epaisseur totale	ISO 1765	mm	5,3
Effective pile thickness Polschichtdicke Epaisseur du velours	ISO 1766	mm	2,9
Total mass Gesamtgewicht Masse surfacique totale	ISO 8543	g/m ²	1.600
Total pile mass Poleinsatzgewicht Masse surfacique de velours totale	ISO 2424	g/m ²	520
Effective pile mass Polschichtgewicht Masse surfacique de velours utile	ISO 8543	g/m ²	348
Pile density Pol-Rohdichte Densité du velours	ISO 8543	g/cm ³	0,121
Number of tufts Noppenzahl Nombre de touffes	ISO 1763	/dm ²	1.900
Static electrical propensity Begehtest Test du marcheur	ISO 6356	kV	≤ 2
Use classification Beanspruchungsbereich Classement d'usage	EN 1307		33 Contract use - Heavy 33 Objektbereich - Extrem 33 Professionnel - Intensive
Luxury rating Komfortklasse Classement de confort	EN 1307		LC1
Impact sound reduction ΔLw Trittschallverbesserungsmaß ΔLw Réduction du bruit de choc ΔLw	ISO 10140	dB	25
Sound absorption Schallabsorption Absorption phonique	ISO 354	Freq. Hz	125 250 500 1000 2000 4000
		αs	0,01 0,04 0,07 0,20 0,38 0,41
Noise reduction Schallreduktion Réduction phonique	ISO 354	αw	0,15
Thermal resistance Wärmedurchlaßwiderstand Résistance thermique	ISO 8302	m ² .K/W	0,08
Flammability Brennverhalten Tenue au feu	EN 13501-1		Bfl - s1 Glued on a non-combustible substrate (19.04941.01)
Prodis - GUT	www.pro-dis.info		F500A395
DOP			1008#HG0011





85 4+5m



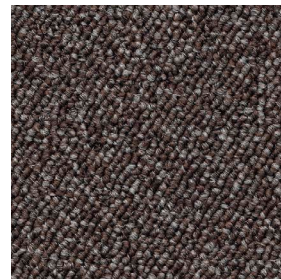
12 4+5m



33 4+5m



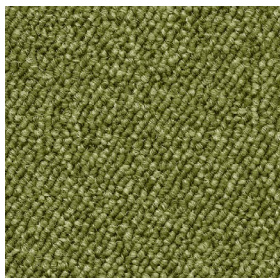
37 4+5m



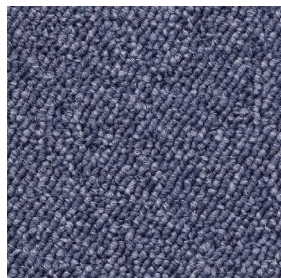
40 4+5m



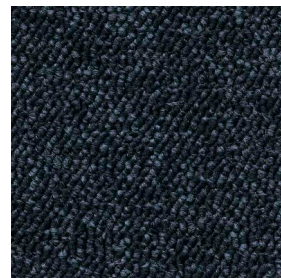
45 4+5m



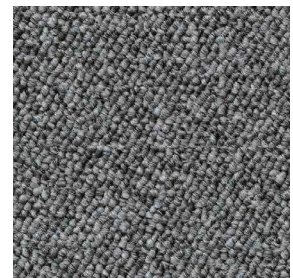
21 4+5m



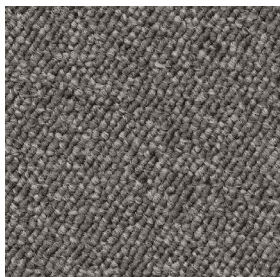
75 4+5m



78 4+5m



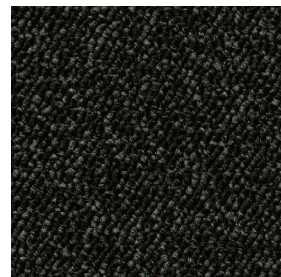
90 4+5m



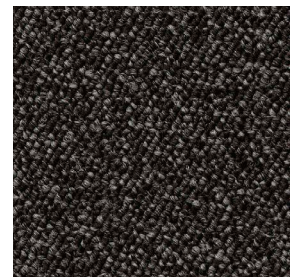
94 4+5m



97 4+5m



98 4+5m



99 4+5m